

the Ella Beaded Segment

FREE PATTERN

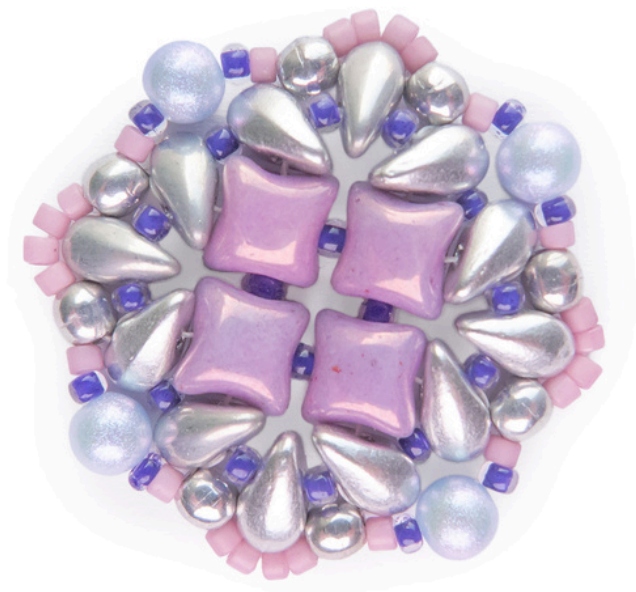
Technique: bead weaving; **Skill level:** beginner

Supplies:

- **Krakovski Crystal Round Pearls 4mm** (4x for one segment)
(Color used for photos: Iridescent Soft Blue)
- **TOHO Treasure or Miyuki Delica Beads**
(Color used for photos: Toho Treasure Opaque Matte Pastel Plumeria)
- **Preciosa Rocaille (Round) 11/0 Seed Beads**
(Color used for photos: Terra Intensive Lined Purple)
- **DropDuo Beads** (12x for one segment)
(Color used for photos: Aluminium Silver)
- **WibeDuo Beads** (4x for one segment)
(Color used for photos: Chalk White Lila Vega Luster)
- **Round Druk Beads 3mm** (8x for one segment)
(Color used for photos: Silver)

Additionally:

- Beading thread: Fireline 4lb or 6lb or Toho One-G
- Size 10, 11 or 12 Beading Needles



More free patterns:

<https://www.eurekacystalbeads.com/free-patterns>

Here is how to make it:

1. Put about 2 feet (60 cm) of thread through your needle. You can start with a stopper bead to prevent your thread end slipping through the beads.

Pick up a WibeDuo (whichever hole), a DropDuo (by the hole on the pointed end), an 11/0, another DropDuo, 11/0, DropDuo. Pick up a second WibeDuo and, making sure it's positioned the same side up as the first one, go down one of its holes. Add one 11/0 and pass again through the first WibeDuo.

Pass through the first DropDuo you added again as well, and step up through its second hole (on the wider end).

*Pick up an 11/0 and a new DropDuo (by the hole on the wider end). Slide them down your thread. Step down the free hole of the DropDuo and pass down the free hole of the first WibeDuo you added.

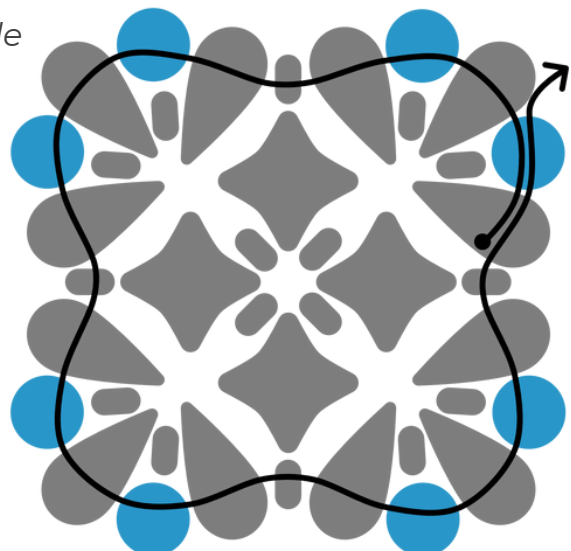
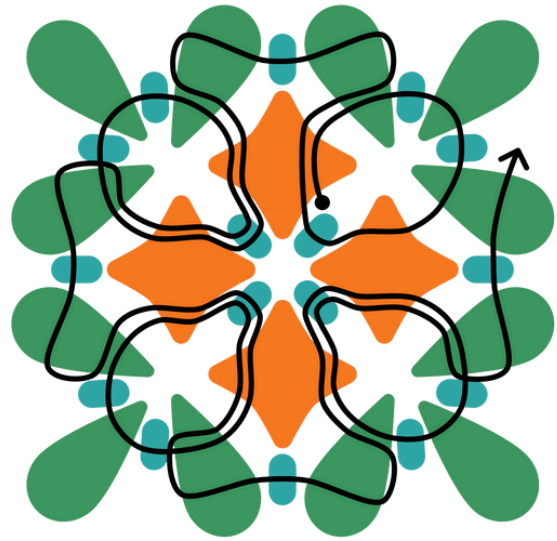
Pick up an 11/0, a new WibeDuo (make sure it's positioned the same side up as the others), a DropDuo, 11/0, DropDuo, and one more 11/0. You don't need to add a third DropDuo, because you already added one here before. Pass through its bottom hole, the previous WibeDuo, the 11/0, the new WibeDuo and the first DropDuo. Step up through the free hole of that DropDuo.*

Repeat from * to * two more times, until you've added 4 WibeDuos and 12 DropDuos in total. For the last sequence, you won't be adding a new WibeDuo, but going through the free hole of one of the first ones you added. Finally, add the last 11/0 to connect the last set of three DropDuos to the first one.

Your thread should be exiting the upper hole (on the rounded side) of the first DropDuo in a set of three.

2. Pick up a 3mm Round Druk bead and pass through the upper hole of the next DropDuo in the three. Keep adding 3mm Rounds between DropDuos in sets of three, and where the threes meet, just pass through the 11/0 that's already connecting them.

After you've made a full round, pass through the first 3mm Round bead you added.



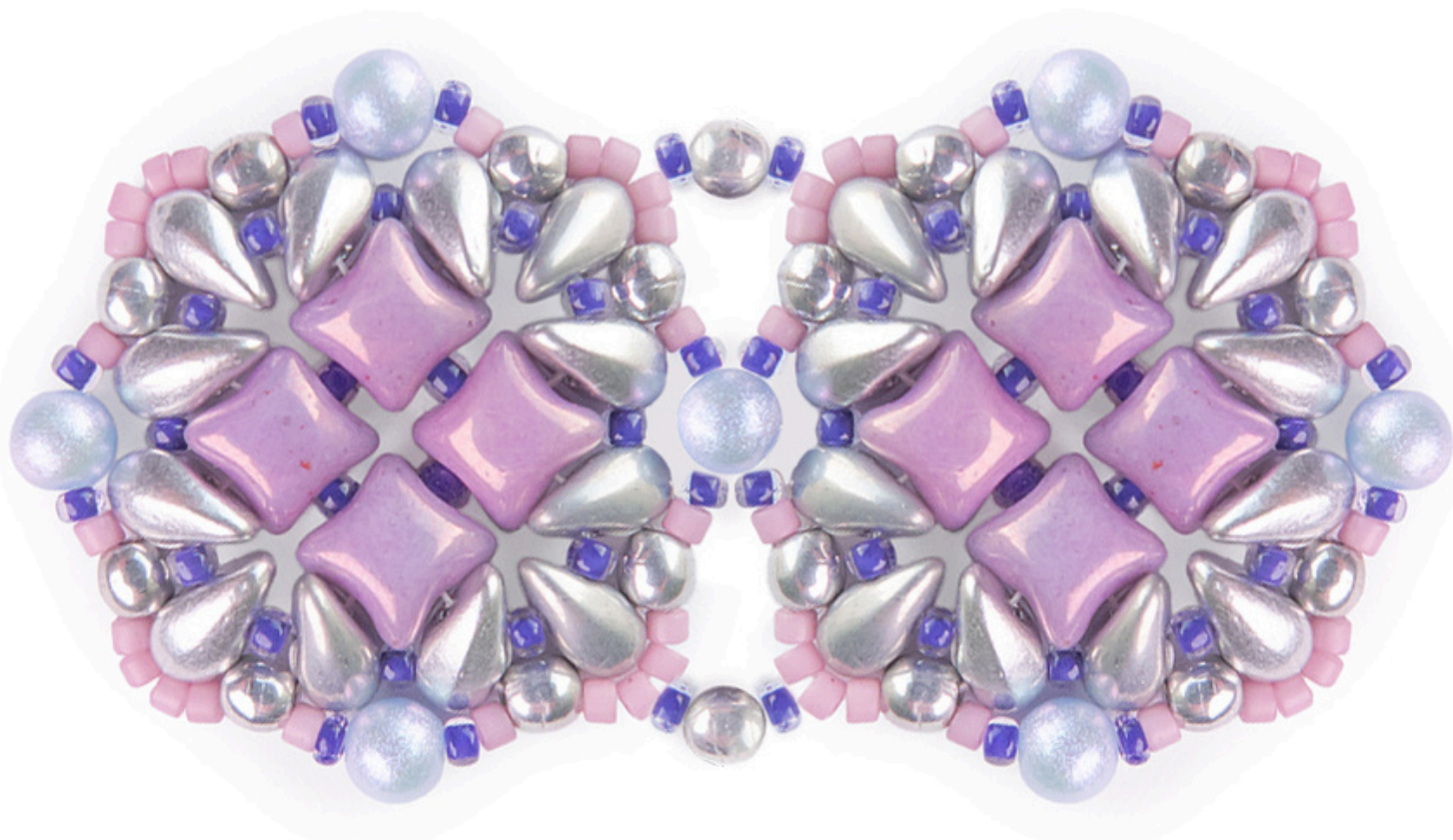
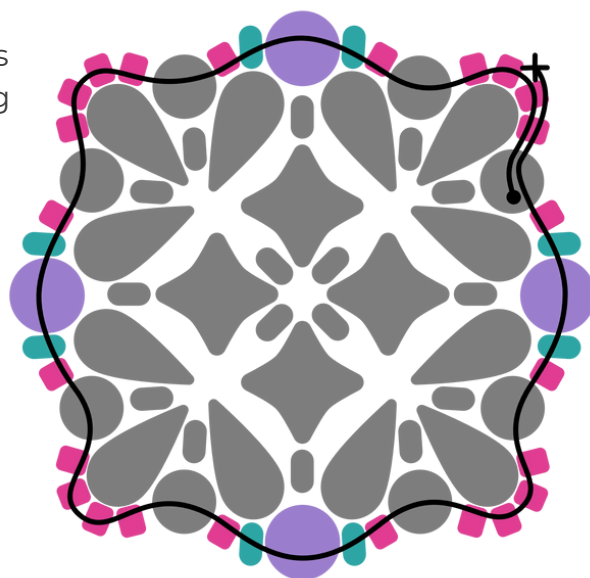
Your thread should be exiting the first 3mm Round Druk bead you added in the completed row.

3. * Pick up 4 TOHO Treasure beads and pass through the 3mm Round Druk bead, placing the seed beads on top of the middle DropDuo in the set of three.

Pick up a Treasure bead, an 11/0, a 4mm Krakovski Crystal pearl, an 11/0 and a Treasure bead. Pass through the next 3mm Round bead along the edge, placing the sequence with the pearl on top of the two connected DropDuos. *

Repeat from * to * three more times until you're made a full round and added 4 sequences of Treasure beads and 4 sequences with the pearl. It's a good idea to pass through all beads in this row again to reinforce the structure. The segment is done!

You can tie off your thread now and weave in the tail, or use it to add a beaded bail (for example like in our [Crystal Waters Pendant video](#)).



More free patterns:

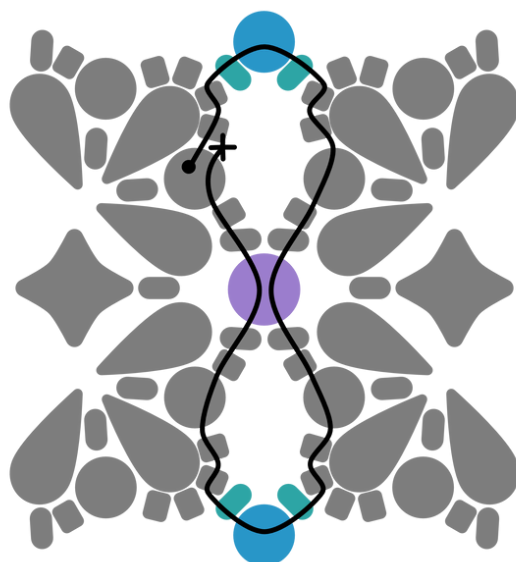
<https://www.eurekacrystalbeads.com/free-patterns>

Connecting segments to make a bracelet:

One way to connect the segments is on their pearl side, in the way so that they “share” the 4mm pearl and are connected on top and bottom.

To do this, when creating each new segment, instead of adding the last 4mm pearl on the side, pass through the pearl on the side of the previous segment.

Add the 11/0 and Treasure bead on both sides just like on all the other sides.



Make a full round to reinforce the structure, and when you reach the first sequence of 4 Treasures after the “shared” pearl, only go through the first 2 of them, pick up an 11/0, a 3mm Round Druk bead, and one more 11/0, and pass down through all beads in this side wall of the other segment, until you reach the next set of 4 Treasures. Add another sequence of 11/0, 3mm Round, 11/0, and pass through the 2 out of 4 Treasures in the new segment. Pass through all beads in this connection again, tie off and weave in your tail

*Congratulations,
you’ve made a multi-use segment!*

Post pictures of your work and ask questions in our Facebook group, The Beader’s Nook:

www.facebook.com/groups/319085948930672

www.eurekacrystalbeads.com



Check out these other free patterns:



The Godmother’s Spell Pendant

[VIEW & DOWNLOAD](#)



The Royal Ball Bracelet

[VIEW & DOWNLOAD](#)

More free patterns:

<https://www.eurekacrystalbeads.com/free-patterns>